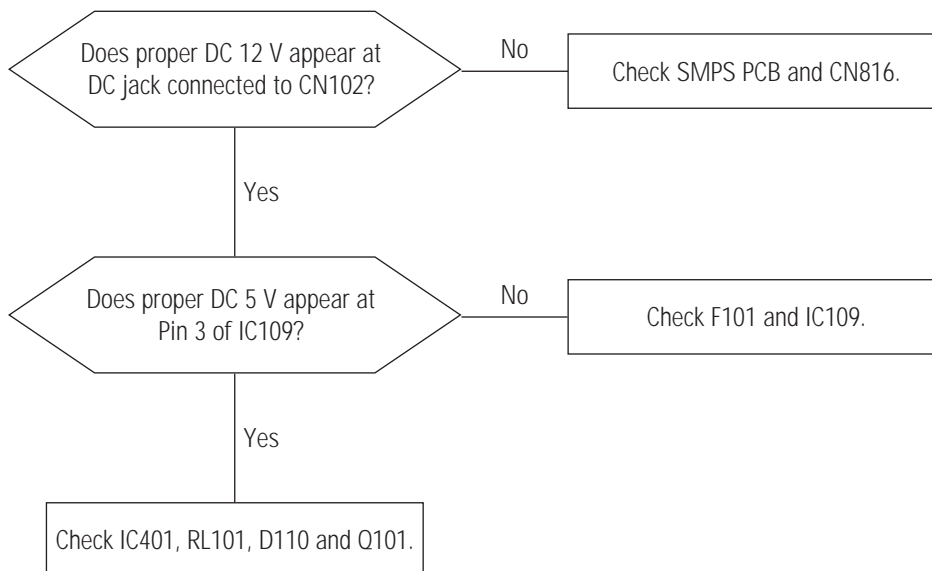
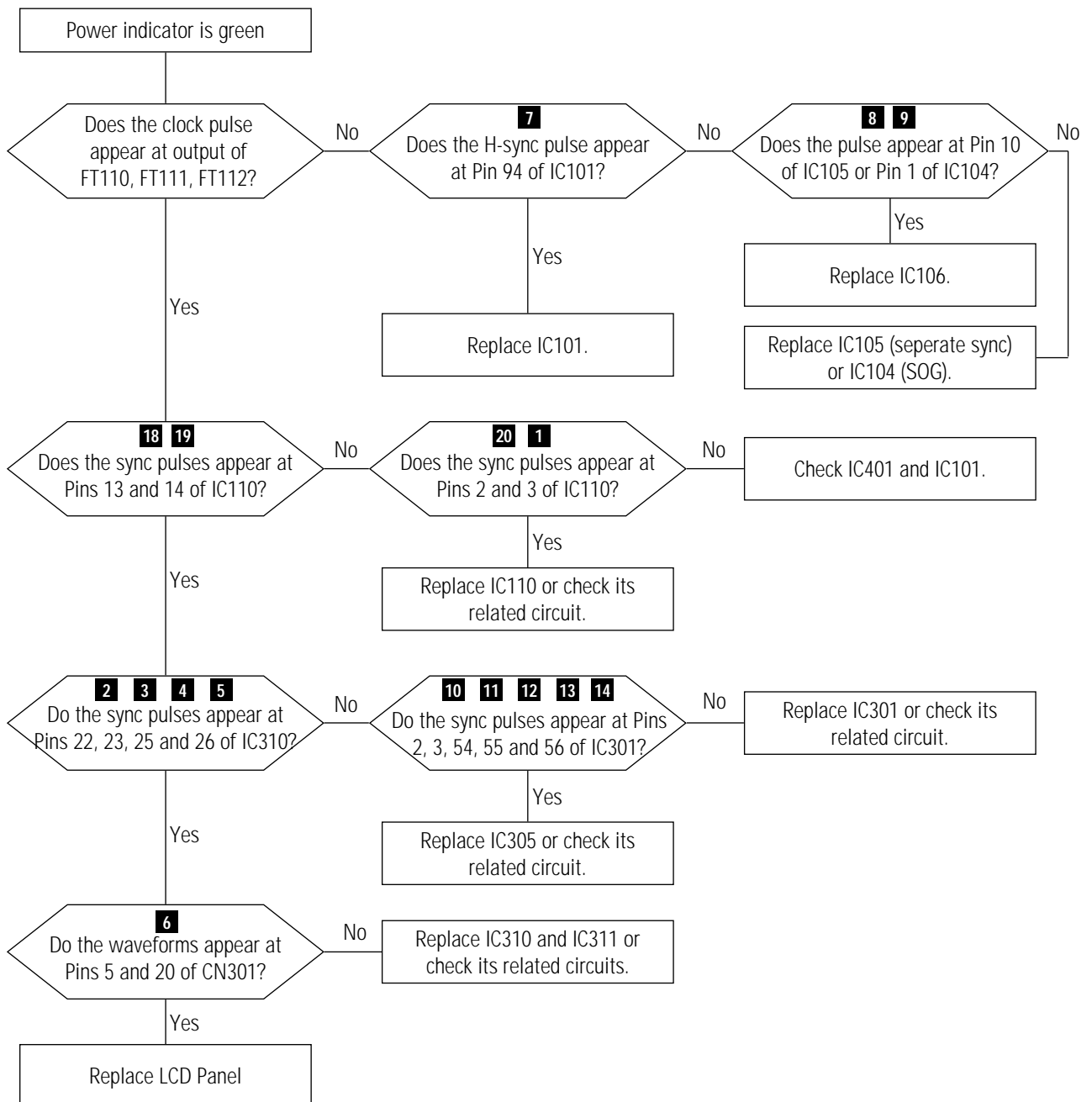

6 Troubleshooting

- Notes:**
- Before troubleshooting, setup the PC's display as below.
 - Resolution: 1024 x 768
 - H-frequency: 48 kHz
 - V-frequency: 60 Hz
 - If no picture appears, make sure the power cord is correctly connected.
 - Check the following circuits.
 - No raster appears: Audio PCB, SMPS PCB, Main PCB
 - 12V develop but no screen: Main PCB
 - 12V does not develop: Audio PCB, SMPS PCB
 - If you push and hold the "EXIT" button for more than 5 seconds, the monitor automatically turns back to the factory preset.

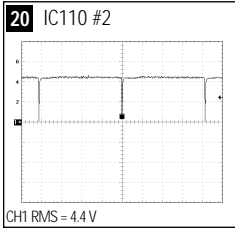
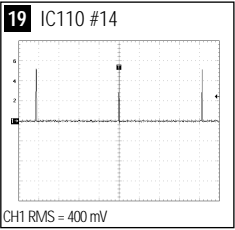
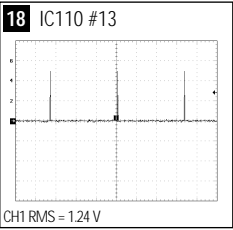
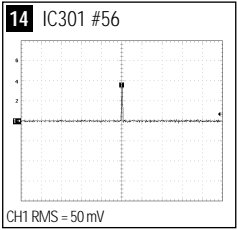
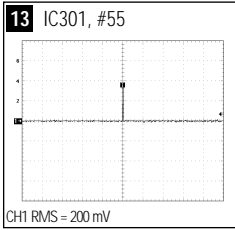
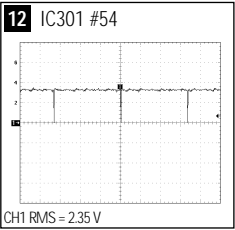
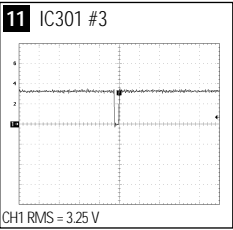
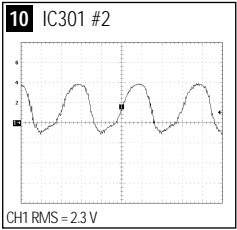
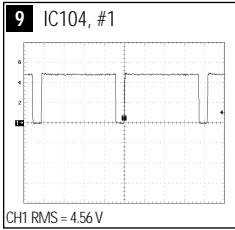
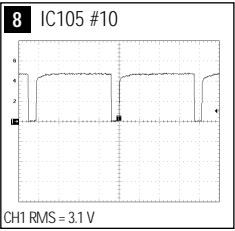
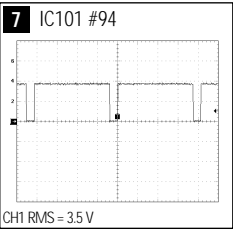
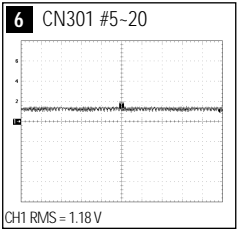
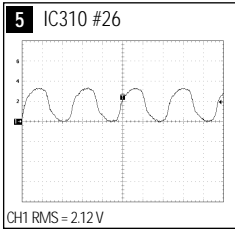
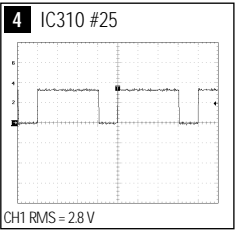
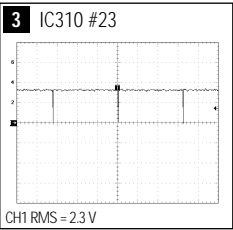
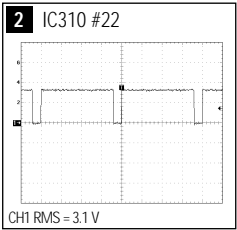
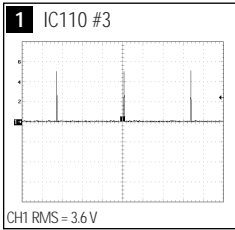
6-1 No Power



6-2 No Video

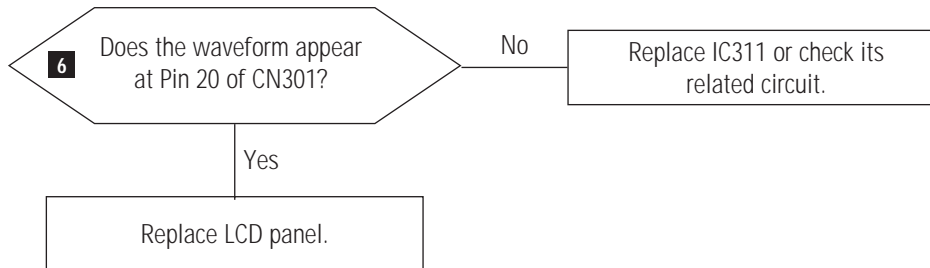


WAVEFORMS

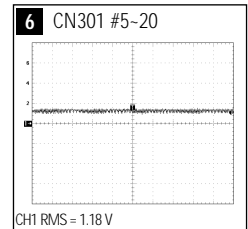


6-3 No Video of Alternate Vertical Line

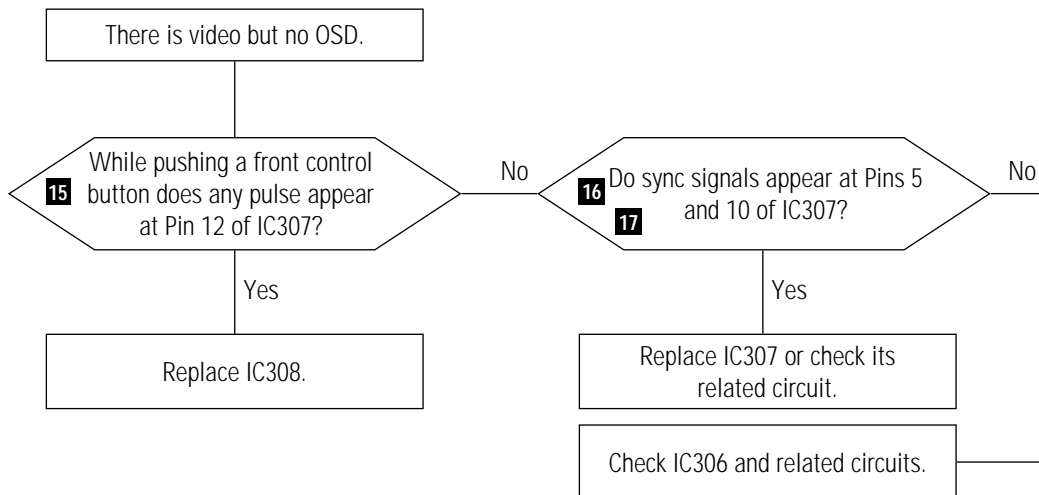
One or more even or odd vertical lines do not display.



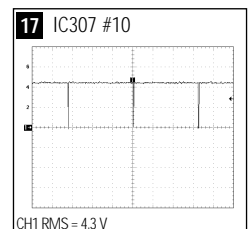
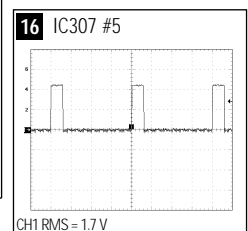
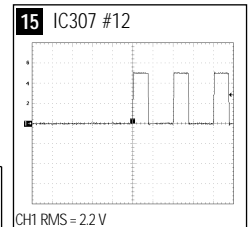
WAVEFORMS



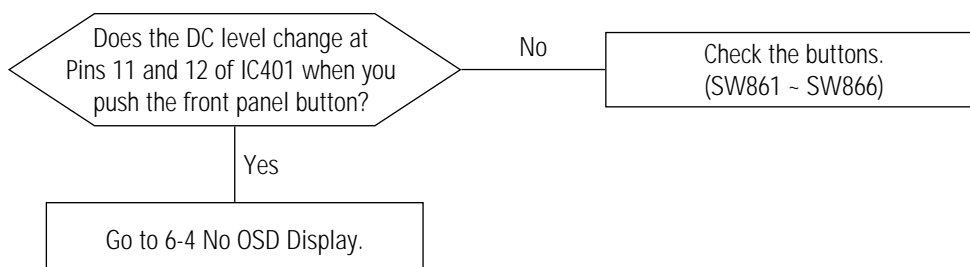
6-4 No OSD



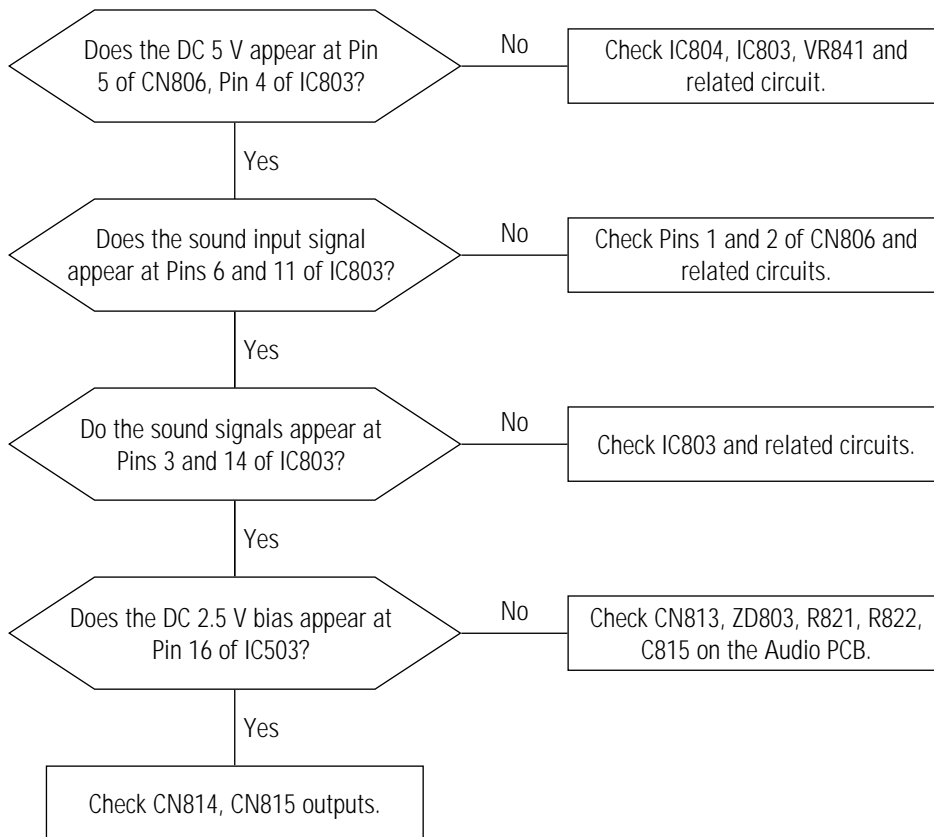
WAVEFORMS



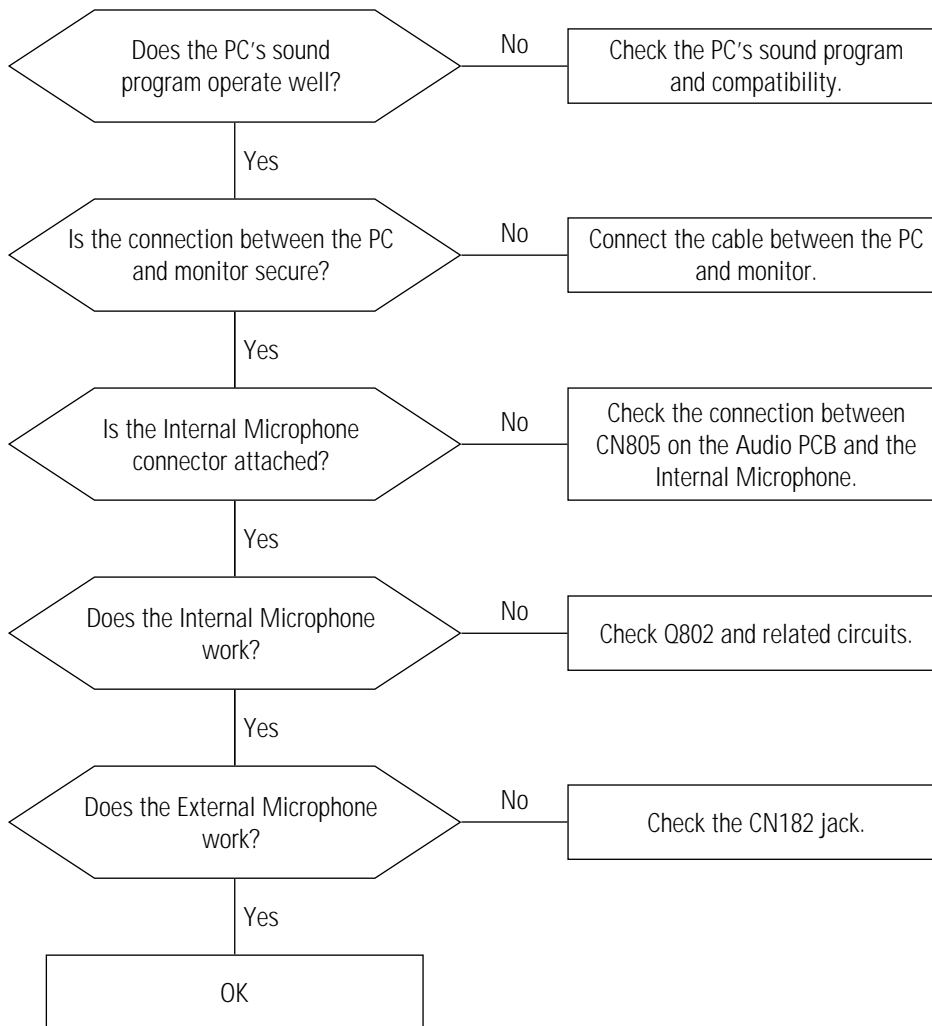
6-5 User Controls Don't Work



6-6 No Sound



6-7 Microphones Don't Work



6-8 Headphones Don't Work

